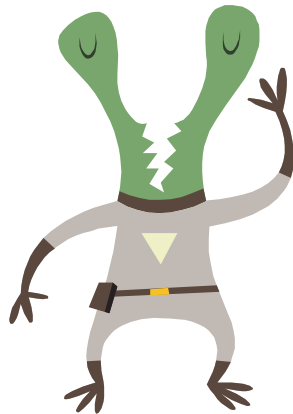


Does your **TEENAGER** feel like an **ALIEN** to you?

*Does it feel like
you are from two separate galaxies?*

*Tried everything
but you just
can't
get through?*



*How do you
communicate
and is
there a way to
break
through?*

PARENTS

EASE STRESS and STRUGGLES and STAY SANE!

*John Barsby Community School Presents
The Coach Approach to Parenting Teens*

- Who: Offered to any parent in the community - **FREE**
What: Angela Slade, BA CYC, MA candidate will facilitate the
“Coach Approach to Parenting Teens” Workshop Series
Where: John Barsby Community School 550-7th St, Nanaimo
When: Thursday’s January 21 - March 4, 2010 from 6-7:30 pm

**REGISTER by phone 250-668-7454 or
e-mail angela@esteemedchics.com
Space is limited**